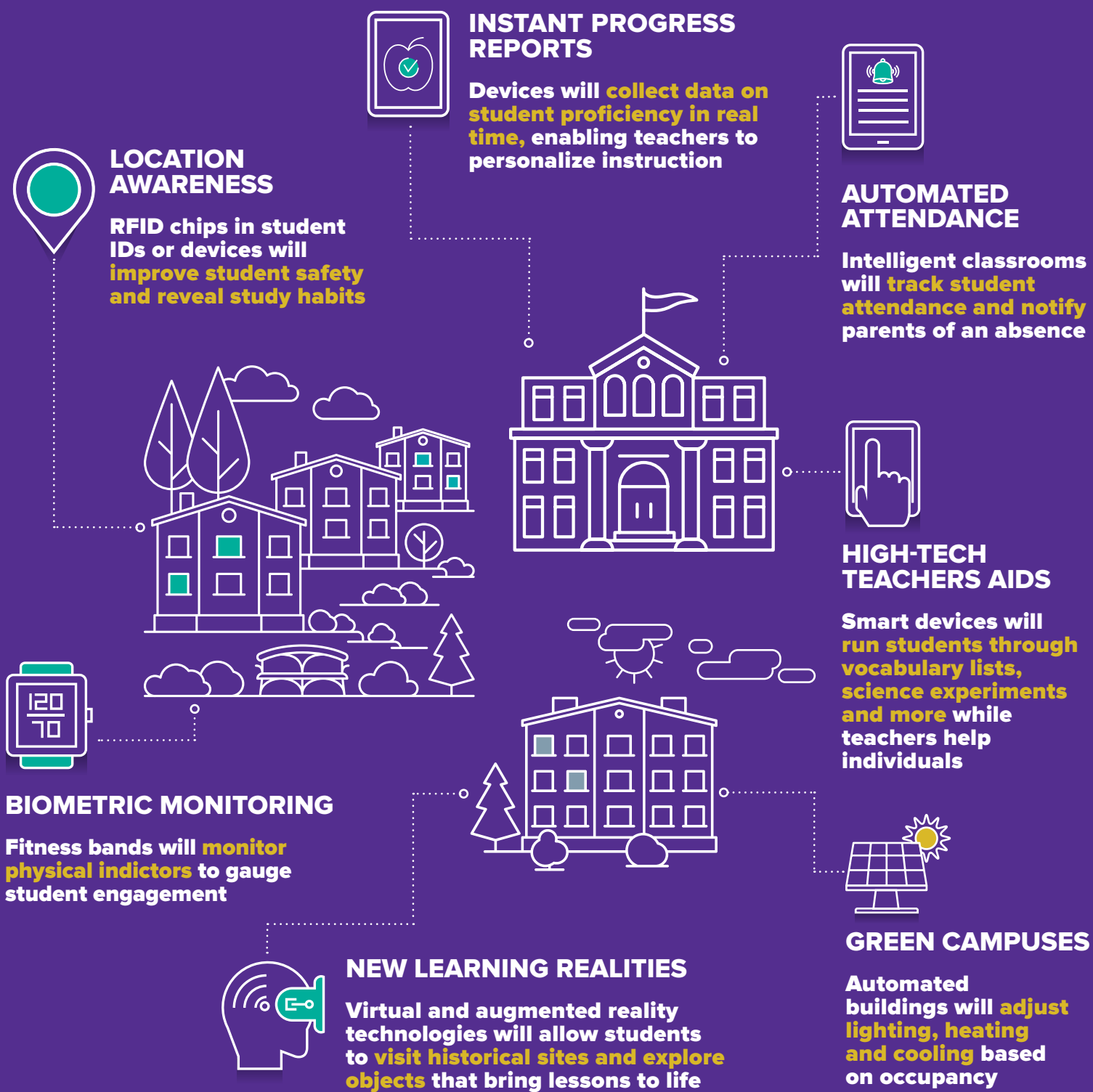


# THE FUTURE OF LEARNING

RELIES ON YOUR NETWORK

Intelligent Internet-connected devices and objects are poised to transform classrooms, campuses and districts. At the heart of this evolution are smart networks that can scale with expanding traffic loads, provide both efficiency and quality of service and protect sensitive student data.

## SMARTER CLASSROOMS AND DISTRICTS WILL LOOK LIKE THIS:



## YOUR OLD NETWORK PROBABLY ISN'T READY FOR THESE CHANGES.

The Center for Digital Education recently conducted a national survey of network services in K-12 education. Respondents say their networks are strained due to:



Growing in-class use of Internet-connected computing devices



Increasing reliance on video and other rich digital content for teaching



Expansion of online courses and remote learning models

Respondents say old network infrastructure won't support future plans because:

New technologies and digital curriculum will continue to drive bandwidth demand

Outdated infrastructure wasn't designed for a highly connected and mobile world

57%

45%

PLAN TO IMPLEMENT OR EXPAND 1-TO-1 COMPUTING INITIATIVES

WILL EXPAND THEIR USE OF CLOUD COMPUTING



## START PLANNING A NETWORK THAT IS.

ANALYZE YOUR NETWORK CAPACITY

MEASURE THE IMPACT OF DIGITAL RESOURCE DEMAND, INCLUDING ONLINE COURSES

ACCOUNT FOR ALL DEVICE CONNECTIONS TO YOUR NETWORK

PREPARE FOR ANTICIPATED GROWTH OF DEVICES AND MULTIMEDIA CONTENT

DEVELOP A PHASED APPROACH TO ITERATE REGULARLY

GET THE RESEARCH REPORT TO LEARN MORE ABOUT BUILDING TOMORROW'S SMARTER CLASSROOM.

CENTER FOR DIGITAL EDUCATION

Spectrum ENTERPRISE