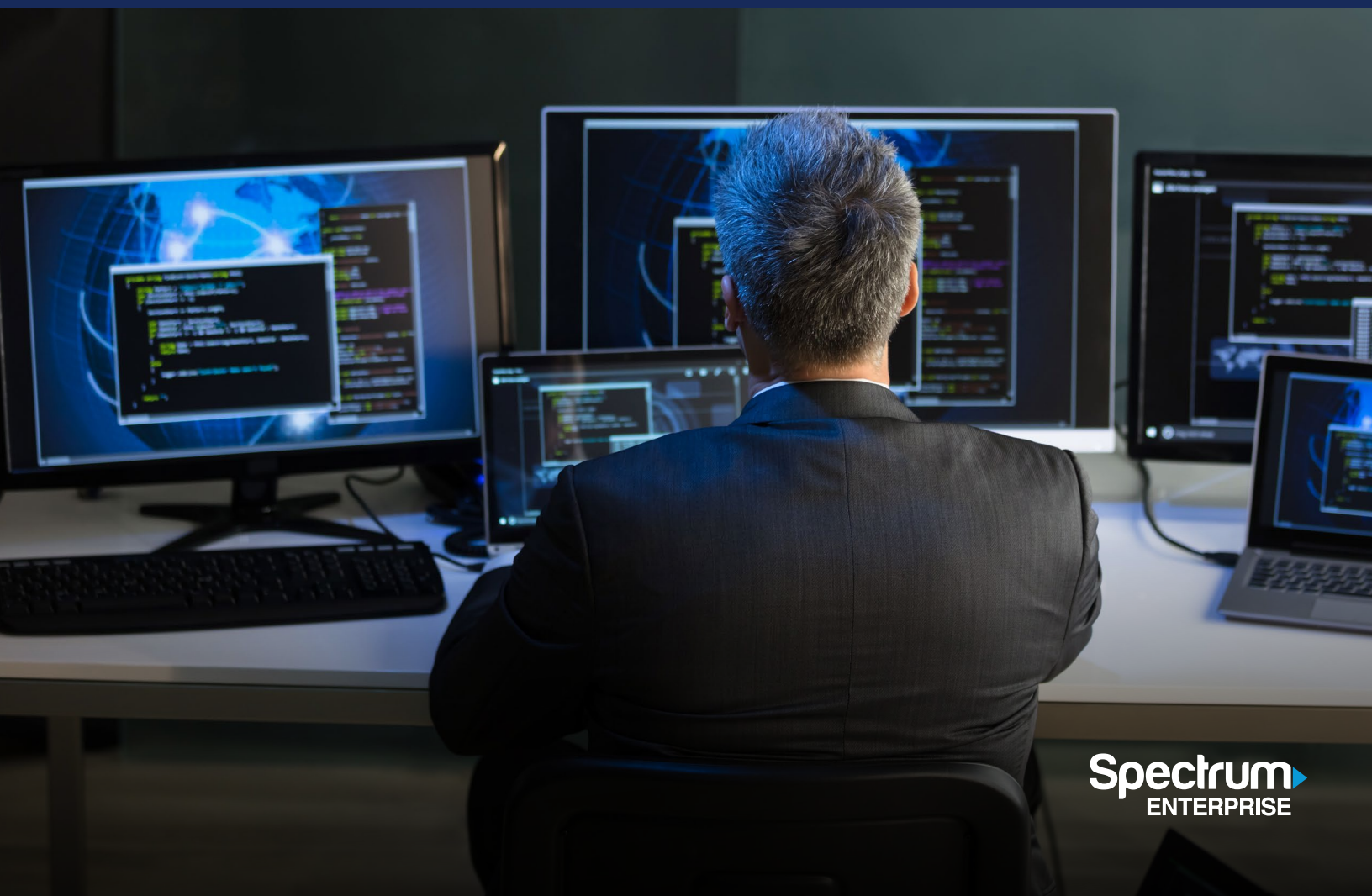


# Protect your government agency from cyber threats with less day-to-day management

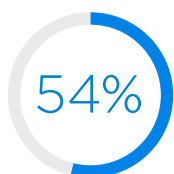
Connect with confidence with an integrated security experience from Spectrum Enterprise



For cybercriminals, finding vulnerabilities in network infrastructure is second nature. With widespread internet access and large numbers of Internet of Things (IoT) and mobile devices added to government networks every day, hackers have many ways to gain access to critical systems. Also worrisome is that 56 percent of state chief information security officers (CISOs) are not very confident, and 35 percent are only somewhat confident, in the cybersecurity practices at state and local government organizations.<sup>1</sup> Being proactive has never been more critical.

To protect their networks and critical data, state and local governments are working to stay ahead of new risks by investing in cybersecurity solutions. Even so, agencies are finding it difficult to manage the volume and complexity of security alerts. It has now reached a point where 54 percent of state security leaders are not confident in their ability to address threats from emerging technology.<sup>2</sup>

At Spectrum Enterprise, we can help you face the current threat landscape confidently by providing much more than just traditional cybersecurity measures for your organization. With our expertise and the strength of our network, we can deliver deeply coordinated protection with sophisticated solutions built to reduce administrative effort and an approach to security that extends from our network core — all the way to your organization.



54% of state security leaders are not confident in their ability to address threats from emerging technology.<sup>3</sup>

### The power of an integrated security experience

When exploring new ways to help your agency stay ahead of cyber threats, it's important to keep in mind that it takes more than just the right solutions to deliver complete protection. To connect with confidence, you want security measures that are integrated with your internet and network connectivity. As your gateway to the public internet, internet service providers (ISPs) are in an excellent position to make a broader impact on your IT security design.

There are many advantages that come with partnering with Spectrum Enterprise — one of the nation's largest ISPs — for a more holistic approach to networking and security.

### A network built for protection

Security in today's environment starts with having a solid foundation. At Spectrum Enterprise, we have experience maintaining a strong, safe backbone and an exceptional network operations center (NOC) to support our clients' needs from our core to the edge of their network. We ensure vulnerable ports are blocked when deploying internet services for clients and use sophisticated intelligence at the heart of our network to scan, capture and remove large-scale attacks by removing suspect traffic.

A unified security approach integrated with your internet and network connectivity can help you eliminate vulnerabilities and expedite the resolution of issues.

### Expertise that ensures performance

Data shows that 74 percent of threats detected in the first quarter of 2021 were zero day malware, capable of circumventing conventional antivirus solutions.<sup>4</sup> This makes it difficult for security professionals to mitigate threats in a timely fashion. To increase efficiency, IT leaders need to know which solutions and processes are most effective. We assist by partnering with major security leaders, such as Fortinet and Netscout, to review, verify and apply measures proven to keep your internet service and network secure.

### Solutions tailored to the demands of your agency

Every state and local government has different needs. That's why we start our process by evaluating your current infrastructure and applications to design the network topology most appropriate for your organization. This can include private Ethernet connections, Ethernet-based Cloud Connect for direct, private access to AWS or Azure, hybrid networks and even segregated WiFi to protect your private traffic with service set identifiers (SSIDs) and personal area networks (PANs).

### Multilevel security — from packet level to network traffic

In many cases, organizations need more than just traditional LAN-side protection for peace of mind. Many cybercriminals are now using volumetric distributed denial of service (DDoS) attacks combined with application layer attacks to overwhelm specific targets and cause complete infrastructure collapse. We can help you avoid these costly disruptions with our DDoS Protection service, by IP address blocking and by integrating with your network for faster threat identification and mitigation.

### The flexibility to fine-tune your threat protection

As security demands change, you need the ability to adjust your strategies quickly and seamlessly. At Spectrum Enterprise, we have your security needs covered by providing a range of additional solutions including perimeter-based protection, firewalls with built-in VPN access, next-generation firewalls with advanced security services and support for integration with client authentication sources. And with all these services fully managed by our IT experts, you never have to worry about whether you have the latest updates installed as our network engineers and support teams handle it for you.

A unified security approach integrated with your internet and network connectivity can help you eliminate vulnerabilities and expedite the resolution of issues. And with today's expanded attack surface, it's essential to have a partner that can remove the complexities of protecting your traffic and data. That's why we provide solutions capable of addressing your organization's unique security threats while giving you confidence in your infrastructure — no matter how you connect.

### Sophisticated solutions to optimize your IT security

The increase in cloud services, mobile connectivity and IoT devices is a major reason why protecting today's organizations has become so challenging. While the intelligence built in to our network core can help by capturing and removing many large-scale cyberattacks, you can still be open to vulnerabilities based on your specific infrastructure. We can identify the strategies and solutions that would be most effective in protecting your organization's attack surface, and help you understand the role they play in keeping your network safe.

The increase in cloud services, mobile connectivity and IoT devices is a major reason why protecting today's organizations has become so challenging.



**Ethernet:** Create an infrastructure for secure, seamless collaboration with a range of Ethernet topologies, including point-to-point, point-to-multipoint and multipoint-to-multipoint, designed to provide private connectivity over our dedicated fiber network. Further protect your internal networks by securely dividing and isolating critical network traffic with a virtual local area network (VLAN) to reduce access to system attack surfaces, reducing risk and helping you maintain business continuity.



**Cloud Connect:** Extend your network with fast, secure and dependable private cloud connections to cloud service providers.



**Managed SD-WAN:** Provide the ideal connectivity for all your sites with a complete, virtualized software-defined wide area network (SD-WAN) service and take advantage of integrated network-based security (firewall and WAN) to simplify protection across your entire enterprise.



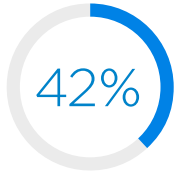
**Managed Network Edge:** Simplify the deployment and management of your organization's network, and strengthen your security posture with Managed Network Edge. This modular solution, delivered over the Cisco Meraki platform, offers security, routing, SD-WAN, WiFi, switching and cameras. Managed Network Edge security features including a firewall, unified threat management (UTM), URL content filtering, advanced malware and intrusion protection, and site-to-site auto VPN integration help you to keep pace with emerging security risks. This secure, turnkey, all-in-one solution grows with your organization for optimal flexibility and scalability.



**Managed WiFi:** Deliver reliable wireless access for visitors and staff with an end-to-end solution that requires user authentication to access the WiFi network and unique SSIDs for employees and visitors.



**Managed Security Service:** Take advantage of a fully managed internet security solution that can protect your network from threats and help you provide high-performing and secure connectivity, while reducing the IT burden of self-managed firewall equipment. Our next-generation firewall takes a multilayered approach, integrating packet-filtering firewalls with intrusion prevention systems and application control. Intrusion detection services, gateway anti-virus and anti-spyware protection, content filtering and more can help you mitigate risks and protect your data. And with automatic updates and network support requirements covered by our technicians, you can connect confidently and let your IT staff focus on other initiatives.



of state IT leaders report inadequate cybersecurity staffing.<sup>5</sup>



**DDoS Protection:** Protect your network against disruptive DDoS attacks with seamless, integrated threat detection and mitigation capabilities that adapt to your traffic using advanced analytics. Our cloud-based service provides fast resolution to keep your legitimate traffic flowing smoothly and detailed incident reporting for valuable insight that can be used for network planning.

All of our services include design, installation, hardware and ongoing maintenance and support available 24/7/365. It's all part of the way we deliver a comprehensive security experience — and a more optimized approach to protecting your network.

### Count on us to help you continue providing citizen services with confidence

Protecting your organization from cybersecurity threats has never been more important. Changes in technology are creating new network vulnerabilities and exploits, while opportunistic hackers are intensifying their efforts to take advantage of challenging situations. To stay ahead of risks and move your agency forward confidently, you need to consider all aspects of your security strategy. By working with an ISP with a private, high-performing fiber network, you can ensure consistent protection is built into your connectivity at every level.

With Spectrum Enterprise, you can get the level of protection you need with a single digital security experience that starts at our network core and extends all the way to the solutions you use to keep your data safe. And with our network design expertise, we can help you set up the infrastructure to connect your organization securely, and provide the fine-tuned security solutions you need to protect your network traffic and data.

### Learn more about how we can help you stay connected confidently when it matters most.

[Learn more](#)

1. ["2020 Deloitte-NASCIO Cybersecurity Study,"](#) Deloitte and NASCIO, 2020.
2. Ibid.
3. Ibid.
4. ["Zero day malware reached an all-time high of 74% in Q1 2021,"](#) Help Net Security, June 29, 2021.
5. ["2020 Deloitte-NASCIO Cybersecurity Study,"](#) Deloitte and NASCIO, 2020.

#### About Spectrum Enterprise

Spectrum Enterprise, a part of Charter Communications, Inc., is a national provider of scalable, fiber technology solutions serving many of America's largest businesses and communications service providers. The broad Spectrum Enterprise portfolio includes [networking and managed services solutions: Internet access, Ethernet access and networks, Voice and TV solutions](#). The Spectrum Enterprise team of experts works closely with clients to achieve greater business success by providing solutions designed to meet their evolving needs. For more information, visit [enterprise.spectrum.com](#).

Not all products, pricing and services are available in all areas. Pricing and actual speeds may vary. Restrictions may apply. Subject to change without notice. ©2021 Charter Communications. All rights reserved.