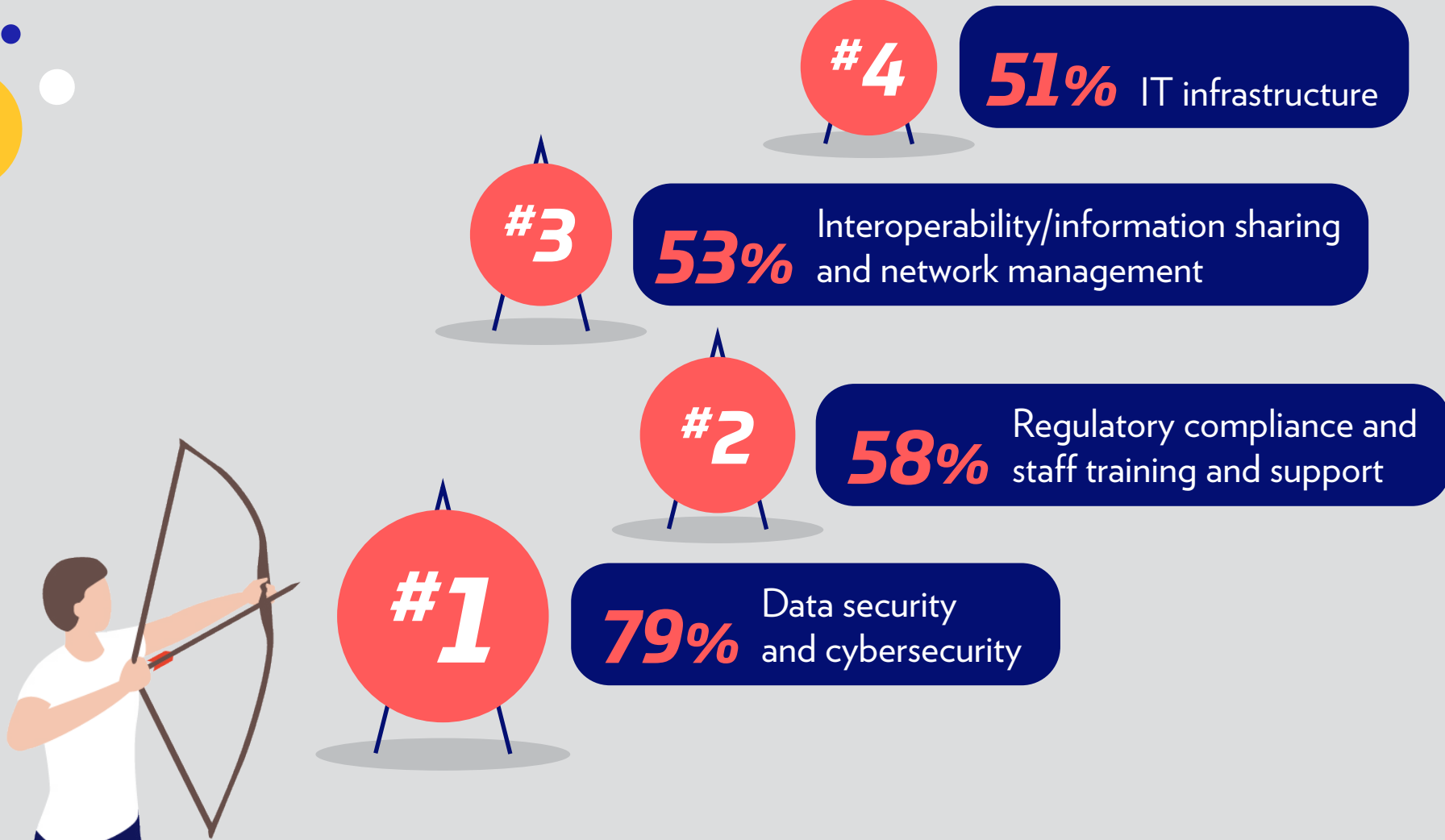


# Network Modernization for Exceptional Patient Experiences and Security

According to recent HIMSS Market Insights research, nearly half of all healthcare organizations are not fully prepared to modernize their cloud connectivity, IT infrastructure, interoperability, network management, regulatory compliance and data security.\*

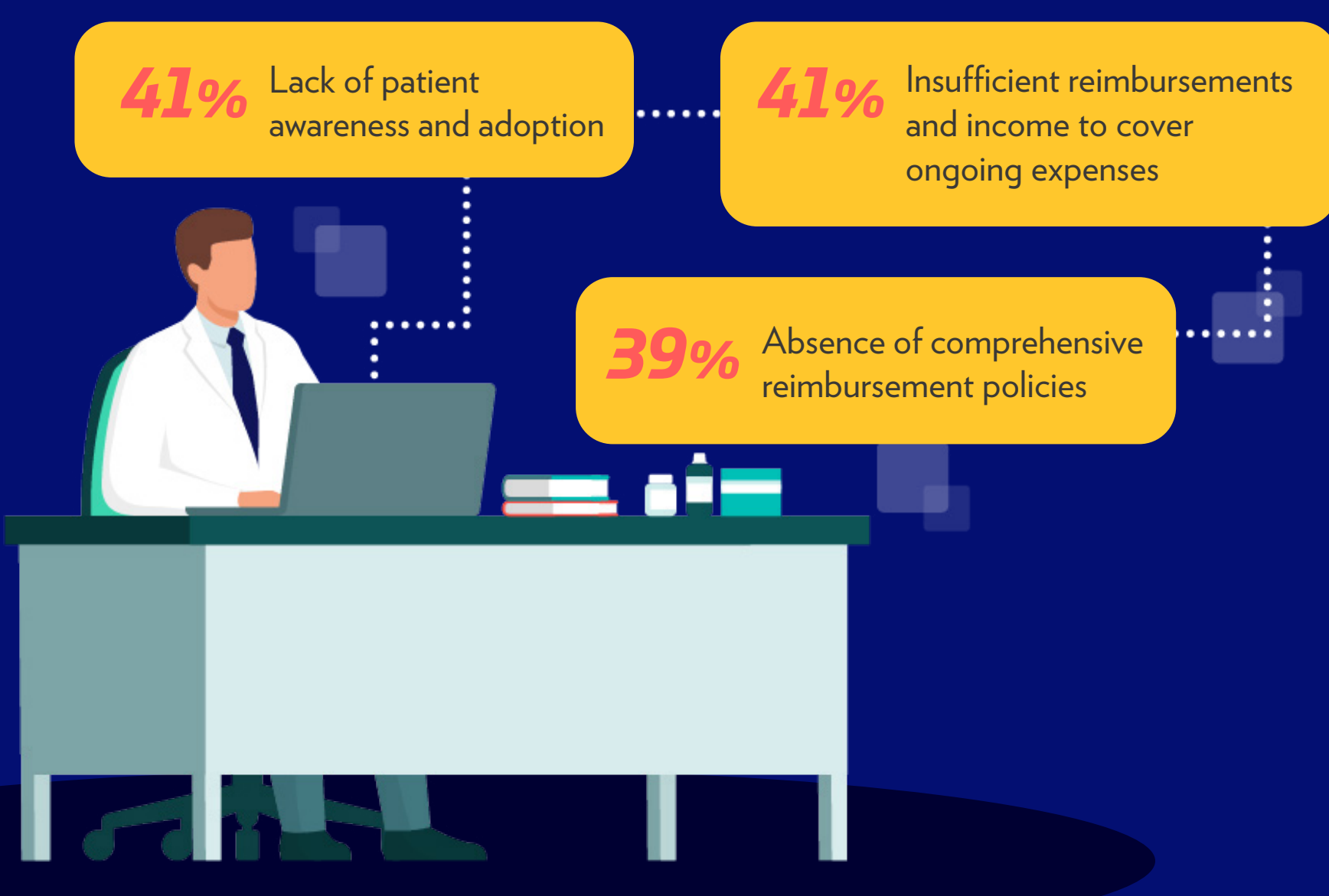
Here are the priorities healthcare leaders are keeping top of mind:

## Top focus during the next 12 months



## They want solutions to telehealth challenges

Top 3 biggest obstacles to implementing or maintaining telehealth initiatives



Only **37%** of leaders are satisfied with unified communications platforms at the patient end, the lowest satisfaction level compared to other telehealth services

And just **27%** of those who lead multi-facility worksites are satisfied with unified communications platforms for patients



## They face potential risks using the technology they have in place today



## But progress is on the horizon

Leaders report that their organizations have more than doubled their progress on the digital transformation journey



Discover how technology can transform the patient and clinician experience. Learn more at [Enterprise.Spectrum.com/DigitalHealth](https://Enterprise.Spectrum.com/DigitalHealth).



**About Spectrum Enterprise®**  
Spectrum Enterprise, a part of Charter Communications, Inc., is a national provider of scalable, fiber technology solutions serving many of America's largest businesses and communications service providers. The broad Spectrum Enterprise portfolio includes networking and managed services solutions: Internet access, Ethernet access and networks, Voice and TV solutions. The Spectrum Enterprise team of experts works closely with clients to achieve greater business success by providing solutions designed to meet their evolving needs. For more information, visit [enterprise.spectrum.com](https://enterprise.spectrum.com).

\*HIMSS Market Insights Research: Enterprise Digital Health Transformation. November and December 2022. This survey was conducted among 102 qualified respondents in executive leadership, IT/technology, clinician leadership and other clinical roles for multi-hospital systems, integrated delivery networks, academic medical centers, ambulatory/outpatient practices, stand-alone hospitals/specialty/children's hospital and clinic/practice settings in the United States. Spectrum Enterprise was not identified as the survey sponsor.