

Turn any school or district space into a safer and smarter space



Help your school and district environments stay reliably connected, safer and more secure.

Gain valuable insights into your physical and digital environments with Spectrum Enterprise smart space solutions. Our smart space solutions are designed to work together to help you minimize disruptions, reduce unnecessary costs, maximize resources, manage accessibility and improve the experiences of students, teachers and staff.

Powered by Managed Network Edge

Smart space technologies are powered by Managed Network Edge — an all-in-one, modular networking solution. Delivered over the Cisco Meraki platform, Managed Network Edge is purposely built to easily connect and configure modern network services such as security, routing, WiFi, SD-WAN, remote access, smart cameras and environmental sensors. Other vendors may provide some of the tools used in smart spaces, but only Managed Network Edge integrates them into a single networking solution for you.

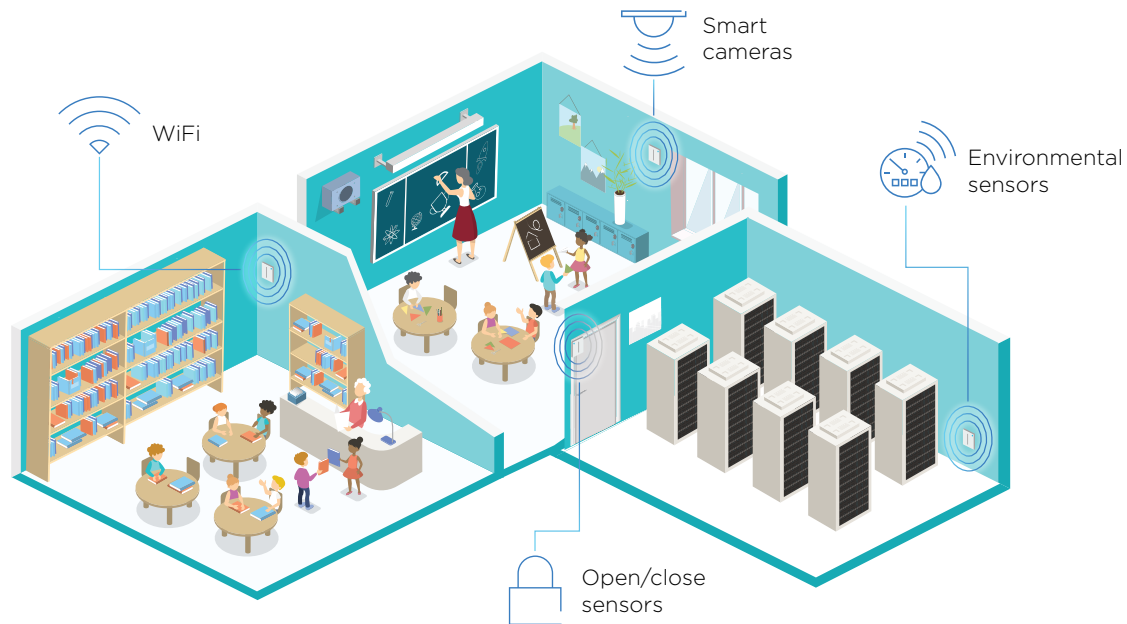
More than monitoring

Managed Network Edge smart space technologies do a lot more than just connect people and systems. They help you maximize safety, comfort and control within your schools and districts. The combination of Managed Network Edge with smart space solutions enables:

- **Insights** with end-to-end visibility into your physical and digital environments.
- **Automation** that is seamless, easy-to-use and scalable across multiple locations.
- **Security** that safeguards every layer of your network.
- **Connectivity** that keeps everyone and everything working together.
- **Sustainability** by conserving resources through real-time environmental monitoring.

Make learning environments work for you

You can easily customize smart space solutions to help you understand and analyze your network and environmental data. By seamlessly integrating these technologies with our ecosystem of third-party applications and/or your building management system, you can turn raw data into intuitive information you need to take meaningful action.



Smart space technologies work together to provide:

Peace of mind

- Reduce unplanned downtime caused by environmental conditions like overheating and water damage or humidity levels.
- Identify anomalies and trends with online portal visualizations and minute-by-minute data reporting.
- Use smart cameras and open/close sensors to ensure only authorized people have access to restricted spaces.
- Provide safe learning environments for students, teachers and staff.

Seamless integration

- View your complete smart space solution through a single, intuitive, cloud-based portal regardless of the number of locations, environments or size of footprint.
- Make informed decisions that result in better outcomes with data from networked devices.
- Enhance network functionality with a suite of highly integrable, third-party applications.

Optimal performance

- Gain complete environmental visibility by associating sensor events with smart camera footage.
- Boost comfort and productivity with smart camera motion-heat maps that illustrate foot traffic within school and district spaces.
- Create a smarter, more sustainable, energy-saving future with insightful information from temperature sensors.

Learn more

enterprise.spectrum.com/ManagedNetworkEdge

About Spectrum Enterprise

Spectrum Enterprise, a part of Charter Communications, Inc., is a national provider of scalable, fiber technology solutions serving many of America's largest businesses and communications service providers. The broad Spectrum Enterprise portfolio includes [networking and managed services solutions](#): [Internet access](#), [Ethernet access and networks](#), [Voice](#) and [TV solutions](#). The Spectrum Enterprise team of experts works closely with clients to achieve greater business success by providing solutions designed to meet their evolving needs. For more information, visit enterprise.spectrum.com.

Not all products, pricing and services are available in all areas. Pricing and actual speeds may vary. Restrictions may apply. Subject to change without notice. ©2022 Charter Communications. All rights reserved.