

Spectrum Enterprise SIP Trunking Service Mitel MiVoice Office (Mitel 5000) 6.0 RLS 28 IP PBX Configuration Guide

About Spectrum Enterprise:

Spectrum Enterprise is a division of Charter Communications following a merger with Time Warner Cable and acquisition of Bright House Networks. Spectrum Enterprise is a national provider of scalable, fiber technology solutions. The Spectrum Enterprise portfolio includes networking and managed services solutions, including Internet access, Ethernet and Managed Network Services, Voice, TV and Cloud solutions. Our industry-leading team of experts works closely with clients to achieve greater business success.

About this document:

Spectrum Enterprise assures IP PBX compatibility by conducting interoperability testing to ensure any potential compatibility issues have been resolved prior to installation. Please review the IP PBX configuration instructions in this guide prior to your installation date.

Be advised that this document may contain references to Charter or Charter Business. All references to Charter should be read as Spectrum Enterprise.

Thank you,

Spectrum Enterprise

Mitel MiVoice Office (Mitel 5000) IP PBX Configuration Guide



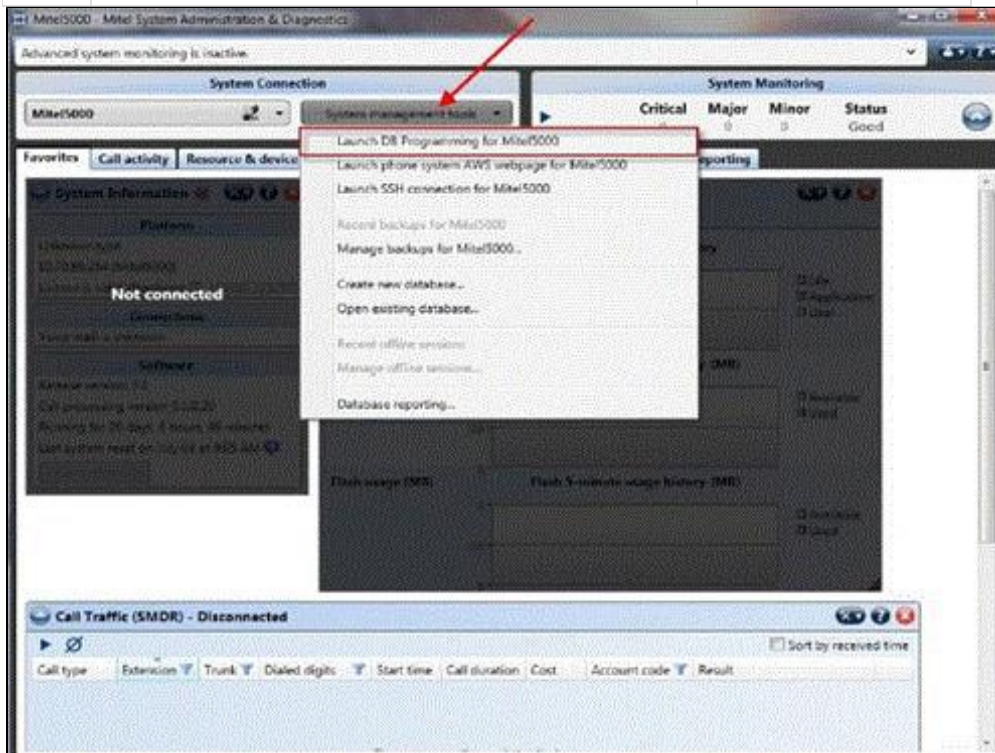
1 Introduction

This document describes how to configure the Mitel MiVoice Office (Mitel 5000) IP PBX 6.0 RIs. 28 to interoperate with the Charter network. It does not provide any information how to provision, configure or use the features of Mitel 5000. Please refer to the documentation provided with the IP PBX or contact the vendor.

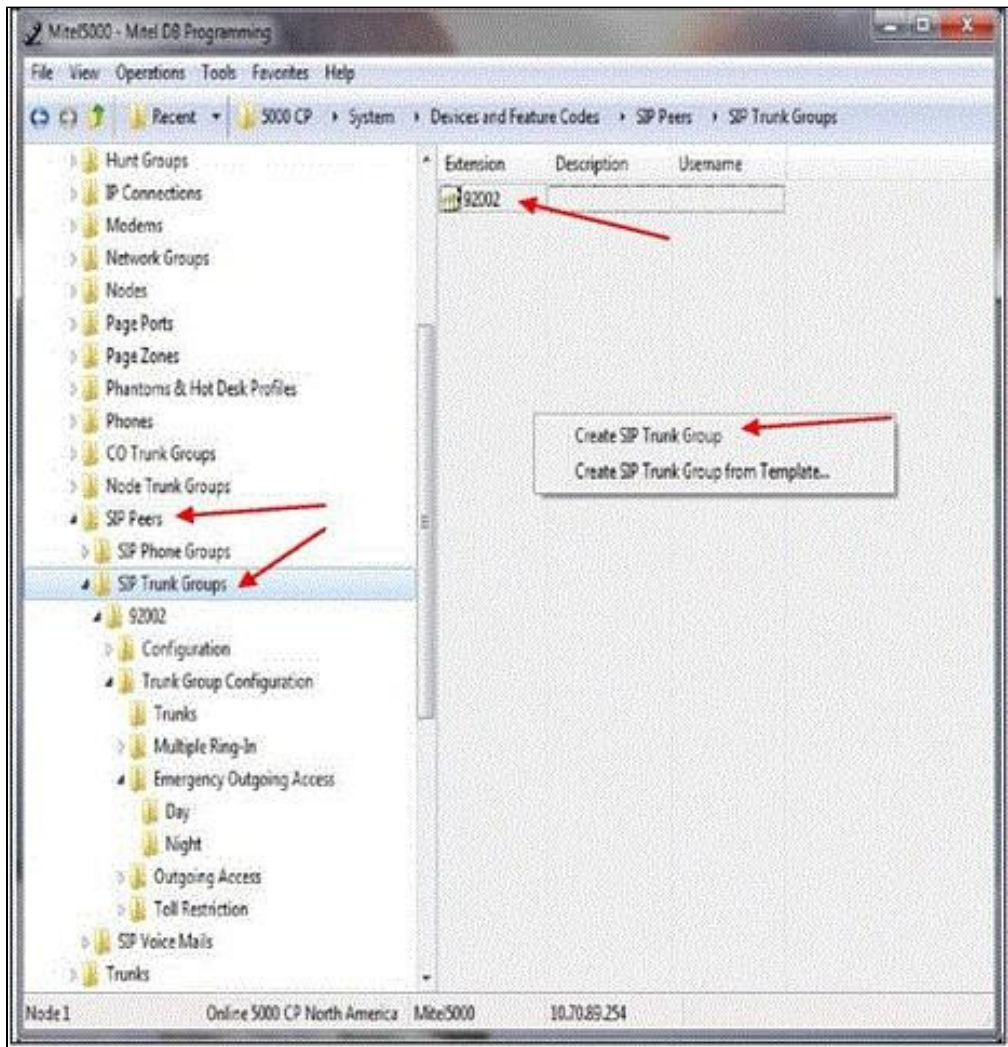
2 Configuration Setup

To set up the IP PBX, follow the step-by-step procedure.

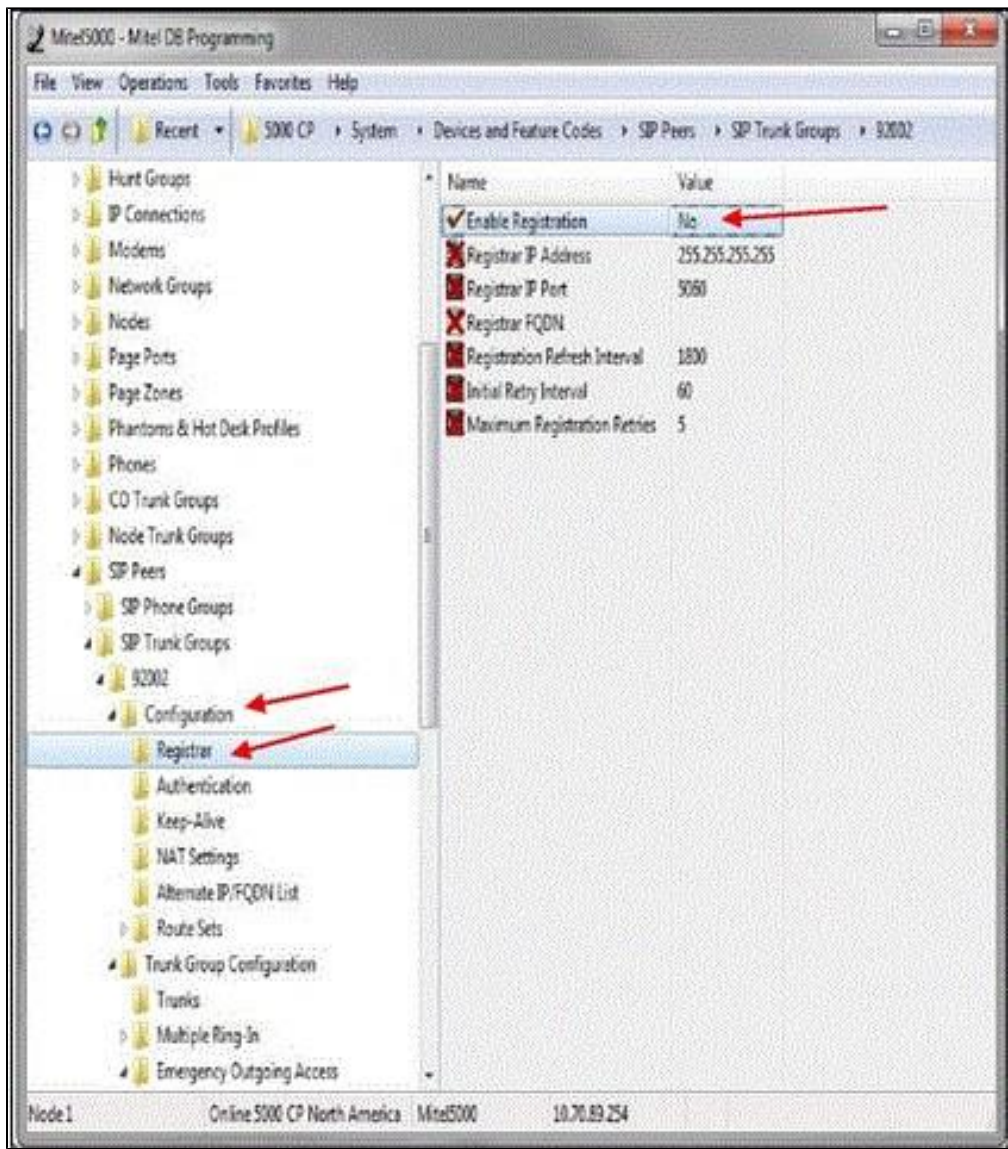
Steps	Action	Result
1	Open the Mitel System Administration and Diagnostics tool	
2	Click the System management tools.	A drop-down menu opens
3	Click Launch DB Programming for Mitel 5000	
4	Go to the next table.	



Steps	Action	Result
1	From the menu on the right frame of the window Click System	A drop-down menu opens.
2	Click Devices and Feature Codes	A drop-down menu opens
3	Click SIP Peers	A drop-down menu opens
4	Click SIP Trunk Groups	On the right side window opens
5	On the right frame window Right click and select Create SIP Trunk	
6	Click the appropriate Extension	Example: 92002
7	Go to the next table.	

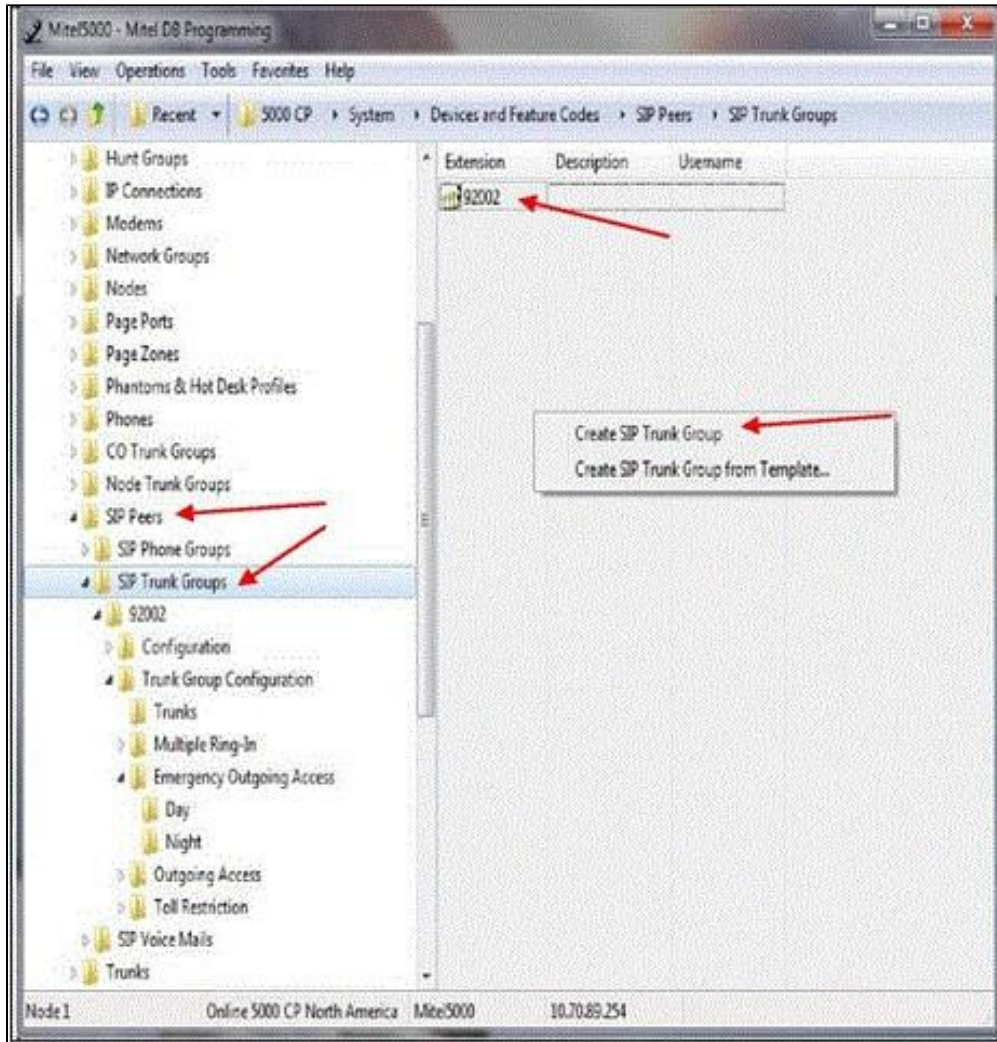


Steps	Action	Result
1	On the right frame menu Click the Extension number	A drop-down menu opens. Example: 92002
2	Click Configuration	A drop-down menu opens
3	Click Registrar	A drop-down menu opens
4	On the right frame of the window For Enable Registration Click No value	This disables the registration for the PBX
5	Go to the next table.	



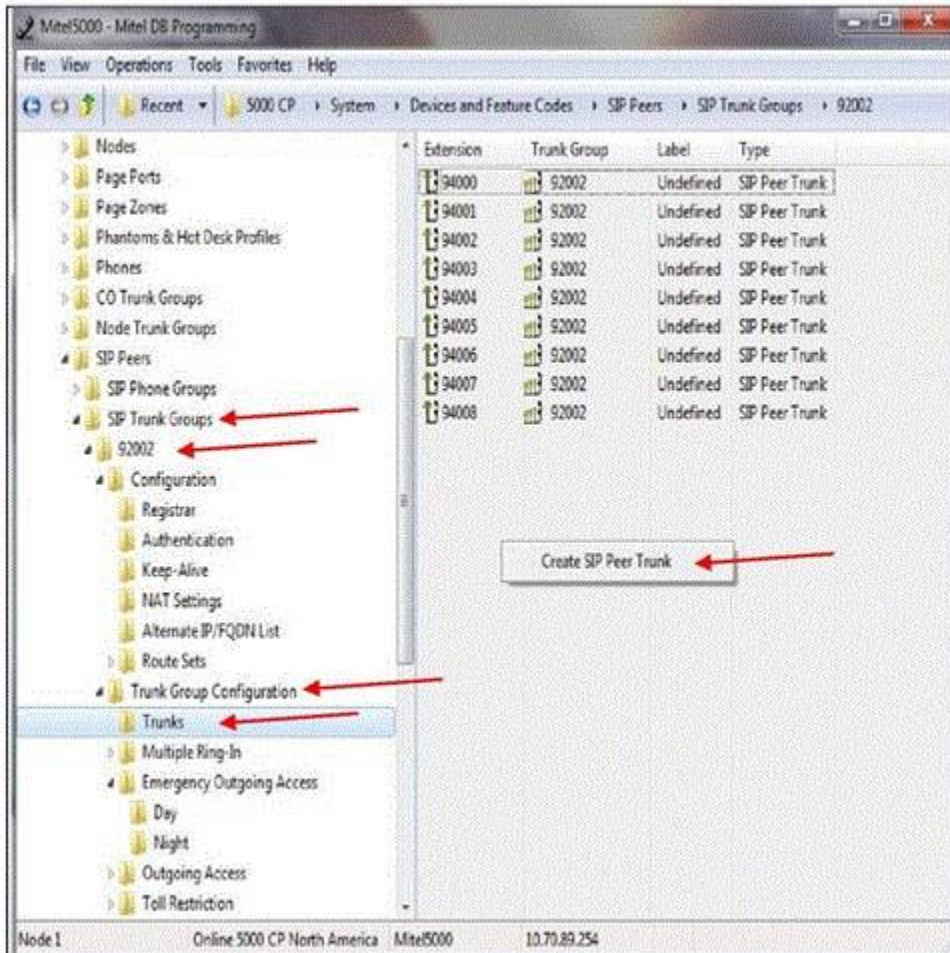
Steps	Action	Result
1	On the right frame menu Click the Extension number	A drop-down menu opens. Example: 92002
2	Click Configuration	A drop-down menu opens
3	Click Registrar	A drop-down menu opens

4	In the right frame of the window For Registrar In the Value column Enter: Appropriate IP address	The IP Address is the eSBC for the network.
5	Go to the next table.	



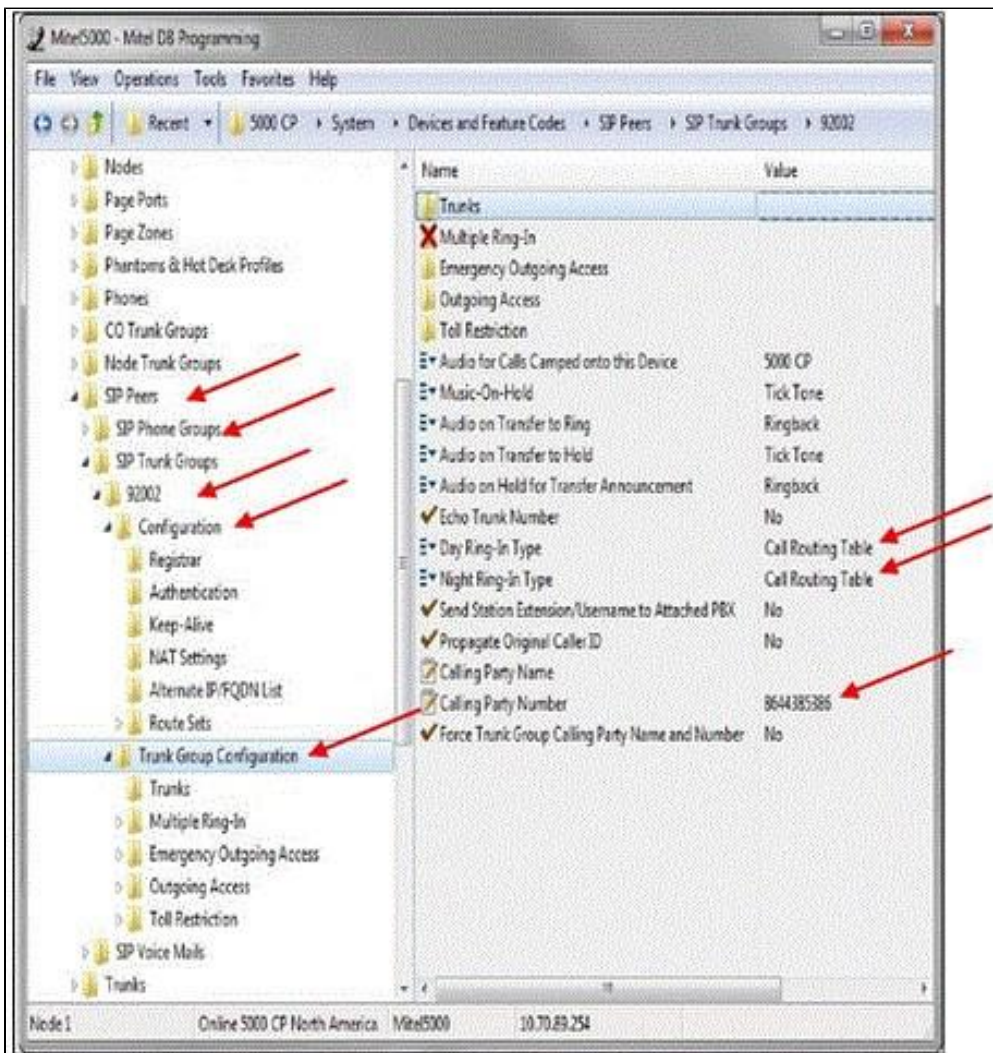
Steps	Action	Result
1	On the right frame menu Click the SIP Trunk Groups	A drop-down menu opens.
2	Click the Extension number	Example: 92002

3	Click Trunk Group Configuration	
4	Click Trunks	
5	In the right frame window Right click and select Create SIP Peer Trunk	
6	Select starting of the extension and number of extensions required	
7	Go to the next table.	



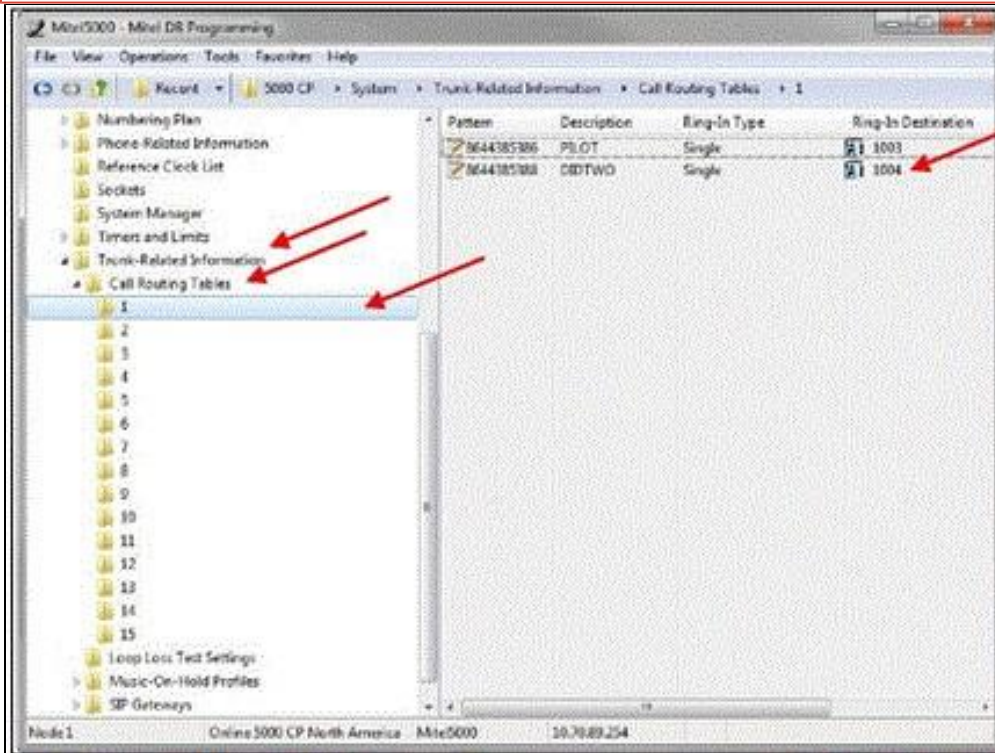
Steps	Action	Result
1	In the left frame of the window Click Sip Peers	

2	Click SIP Trunk Groups	
3	Click the Extension	Example: 92002
4	Click Trunks	
5	Click the Trunk Group Configuration	
6	In the right frame of the window In Day Ring-In Type And Night Ring-In Type Select Call Routing Table	Example: 8644385386
7	Go to the next table.	



Steps	Action	Result
-------	--------	--------

1	In the left frame of the window Click System	
2	Click Trunk Related Information	
3	Click Call Routing Tables	
4	Select Call RoutingTable 1	
5	On the right frame window Right click Click on Add To 1 list	
6	From the pop-box In the Pattern field Enter: DID number assigned	Example: 8644385388
7	In the Ring Type field Select Single	
8	In the Ring-In Destination field Enter: Extension number	Example: 1004
9	Procedure completed	



The information contained herein is confidential and should not be disclosed, copied, or duplicated in any manner without written